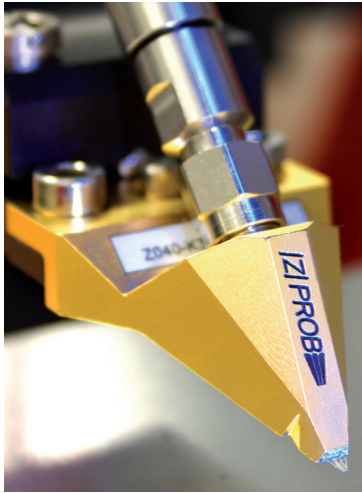


# Cascade Microtech, Inc.

## PRODUCT OVERVIEW



Precision RF and  
microwave probing

# IZI Probe®

## RF and Microwave Wafer Probes

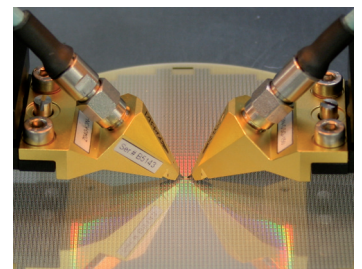
The |Z| Probe family of RF and microwave wafer probes revolutionized the way you test your HF devices. Contacting your device under test (DUT) has never been easier and uses less overtravel than other wafer probes, which means less crashes and a longer probe life. In fact, the |Z| Probe is guaranteed to last for over 1,000,000 contacts.

The |Z| Probe family has been now further enhanced with the innovative 1MX™ technology. Electrical performance, especially insertion and return loss, has been advanced to levels superior to older technologies like thin-film and microcoax probes. In addition, isolation (crosstalk) has been significantly improved resulting in a probe that delivers the highest accuracy for your wafer-level RF and microwave measurements.

To calibrate your probes, we offer the powerful SussCal® Calibration Software and the highly-accurate CSR family of calibration substrates.

### |Z| PROBE GS/SG

Frequency	10 GHz	20 GHz
1MX technology	-	✓
Pitches (µm)	550 to 1250 µm*	50 to 500 µm*
Body		
Slim case	K1N	K1N
Slim case high temp / cryo	Y1N	Y1N
Standard case	K3N	K3N
Standard case high temp	Y3N	Y3N
Oblique left / right	KRN/KLN	-



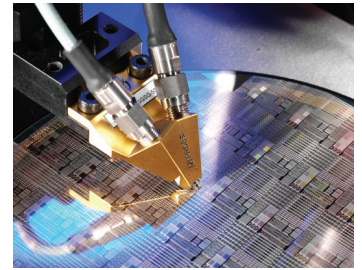
### |Z| PROBE GSG

Frequency	40 GHz	50 GHz	67 GHz
1MX technology	✓**	✓	✓
Pitches (µm)	50 to 1250 µm*	50 to 500 µm*	50 to 250 µm*
Body			
Slim case	K1N	A1N	V1N
Slim case high temp / cryo	Y1N	B1N	C1N
Standard case	K3N	A3N	V3N
Standard case high temp	Y3N	B3N	C3N
Oblique left / right	KRN/KLN	-	-

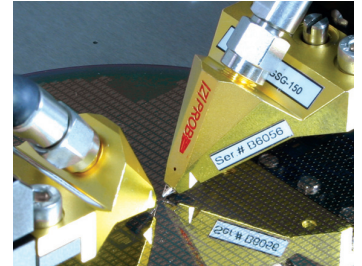


**DUAL |Z| PROBE**

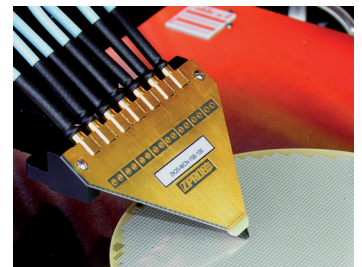
	<b>GSGSG</b>	<b>GSSG / SGS</b>
<b>Frequency</b>	<b>40 GHz / 50 GHz</b>	<b>18 GHz</b>
<b>1MX technology</b>	✓	✓
<b>Pitches (µm)</b>	100 to 500 µm*	100 to 500 µm*
<b>Body</b>		
Standard case	K3N / A3N	K3N
High temp / cryo	Y3N / B3N	Y3N

**|Z| PROBE POWER GSG****(FOR HIGH POWER / LOW LOSS APPLICATIONS)**

<b>Frequency</b>	<b>40 GHz</b>
<b>Pitches (µm)</b>	100 to 500 µm*
<b>Body</b>	
Slim case with 2.92 mm connector	K1A
Standard case with 2.92 mm connector	K3A
Slim case with 2.4 mm connector	A1A
Standard case with 2.4 mm connector	A3A

**MULTI |Z| PROBE**

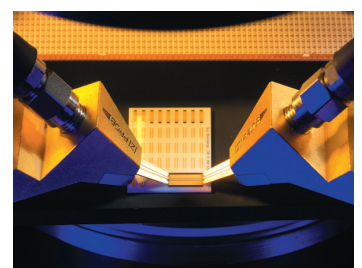
	<b>GSG</b>	<b>GS / SG, SS</b>
<b>Frequency</b>	Up to 15 GHz	Up to 6 GHz
Digital applications	Up to 25 GHz	Up to 7.5 GHz
<b>Pitches (µm)</b>	100, 125, 150, 200, 250, 500 µm	100, 125, 150, 200, 250, 500 µm
<b>Number of contacts</b>		
100 to 200 µm	Up to 35 contacts	On request
250 µm	25 contacts	On request
500 µm	Up to 7 contacts	On request

**|Z| PROBE OBLIQUE**

	<b>GSG</b>	<b>GS / SG</b>
<b>Frequency</b>	<b>40 GHz</b>	<b>10 GHz</b>
<b>Pitches (µm)</b>	100, 125, 150, 200, 250 µm	100, 125, 150, 200, 250 µm
<b>Body</b>		
Left	KLN	KLN
Right	KRN	KRN

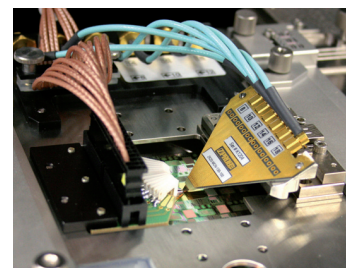
**|Z| PROBE PCB**

	<b>GSG / GS / SG</b>
<b>Frequency</b>	<b>GS / SG: 4 GHz</b> <b>GSG: up to 20 GHz</b>
<b>Pitches (µm)</b>	500, 650, 800, 1000, 1250, 1500, 2000, 2500 µm 350 to 4500 µm available upon request
<b>Body</b>	
Slim case	P1S
Standard case	P3S



## |Z| PROBE CARD

<b>Round</b>	Minimum 4.5 inch in diameter
<b>Rectangular</b>	Minimum 4.5 inch
<b>Probe layout</b>	NESW
<b>Available with</b>	Z  Probe GS/SG  Z  Probe Dual  Z  Probe Multi  Z  Probe  Z  Probe Power



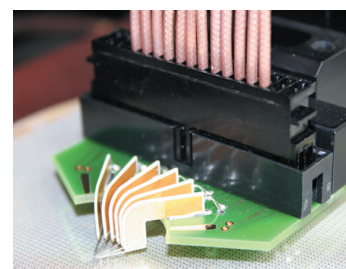
## HF PROBE WEDGE

<b>Available with</b>	Z  Probe Dual  Z  Probe  Z  Probe Power  Z  Probe Oblique
-----------------------	--



## DC PROBE WEDGE

<b>Kelvin</b>	Up to eight microstrip blades
<b>DC</b>	Up to 20 blades (microstrip, ceramic or metal) Others on request



Data, design and specification depend on individual process conditions and can vary according to equipment configurations.  
Not all specifications may be valid simultaneously.

\* See data sheet for exact specifications. Custom pitches and footprints are available on request.

\*\* 1MX technology is available for pitches up to 500 µm.

© Copyright 2010 Cascade Microtech, Inc.  
All rights reserved. Cascade Microtech and |Z| Probe are registered trademarks and 1MX is a trademark of Cascade Microtech, Inc. All other trademarks are the property of their own respective owners.

Data subject to change without notice

**Cascade Microtech, Inc.**  
toll free: +1-800-550-3279  
phone: +1-503-601-1000  
email: cmj\_sales@cmicro.com

**Cascade Microtech GmbH**  
phone: +49-811-60005-0  
email: cmg\_sales@cmicro.com

**Cascade Microtech Japan**  
phone: +81-3-5615-5150  
email: cmj\_sales@cmicro.com

**Cascade Microtech Shanghai**  
phone: +86-21-3330-3188  
email: cmc\_sales@cmicro.com

**Cascade Microtech Singapore**  
phone: +65-6873-7482  
email: cms\_sales@cmicro.com

**Cascade Microtech Taiwan**  
phone: +886-3-5722810  
email: cmt\_sales@cmicro.com

ZProbeFamily-SS-0310

[www.cascademicrotech.com](http://www.cascademicrotech.com)

